



Intruduction to the Indonesia PSEAH Network

2022-23





INDONESIA NETWORK

PSEAH

PROTECTION FROM SEXUAL EXPLOITATION ABUSE AND HARASSMENT



CORE PRINCIPLES

RELATING TO SEXUAL EXPLOITATION AND ABUSE (SEA)

1

SEA constitute acts of gross misconduct and are grounds for termination of employment.

NO SECOND CHANCES

2

Sexual activity with children (< 18 yrs) is prohibited.

NO SEX WITH CHILDREN

3

Exchange of money, employment, goods or services for sex is prohibited, including hiring prostitutes.

DON'T HIRE/BRIBE ANYONE FOR SEX

4

Any sexual relationship with beneficiaries that involves improper use of position is prohibited.

NO SEX WITH BENEFICIARIES

5

Humanitarian workers are obligated to report any concerns regarding SEA by fellow workers.

ALWAYS REPORT SEA

6

Humanitarian workers are obliged to create and maintain an environment which prevents SEA.

DISCOURAGE SEA AROUND YOU





联合国 / UNITED NATIONS / NATIONS UNIES / ОБЪЕДИНЕННЫЕ НАЦИИ / NACIONES UNIDAS / الأمم المتحدة

“

Let us declare in one voice:

We will not tolerate anyone committing or condoning sexual exploitation and abuse.

We will not let anyone cover up these crimes with the UN flag.

Every victim deserves justice and our full support.

Together, let us deliver on that promise.

”

United Nations Secretary-General

António Guterres

9 March 2017

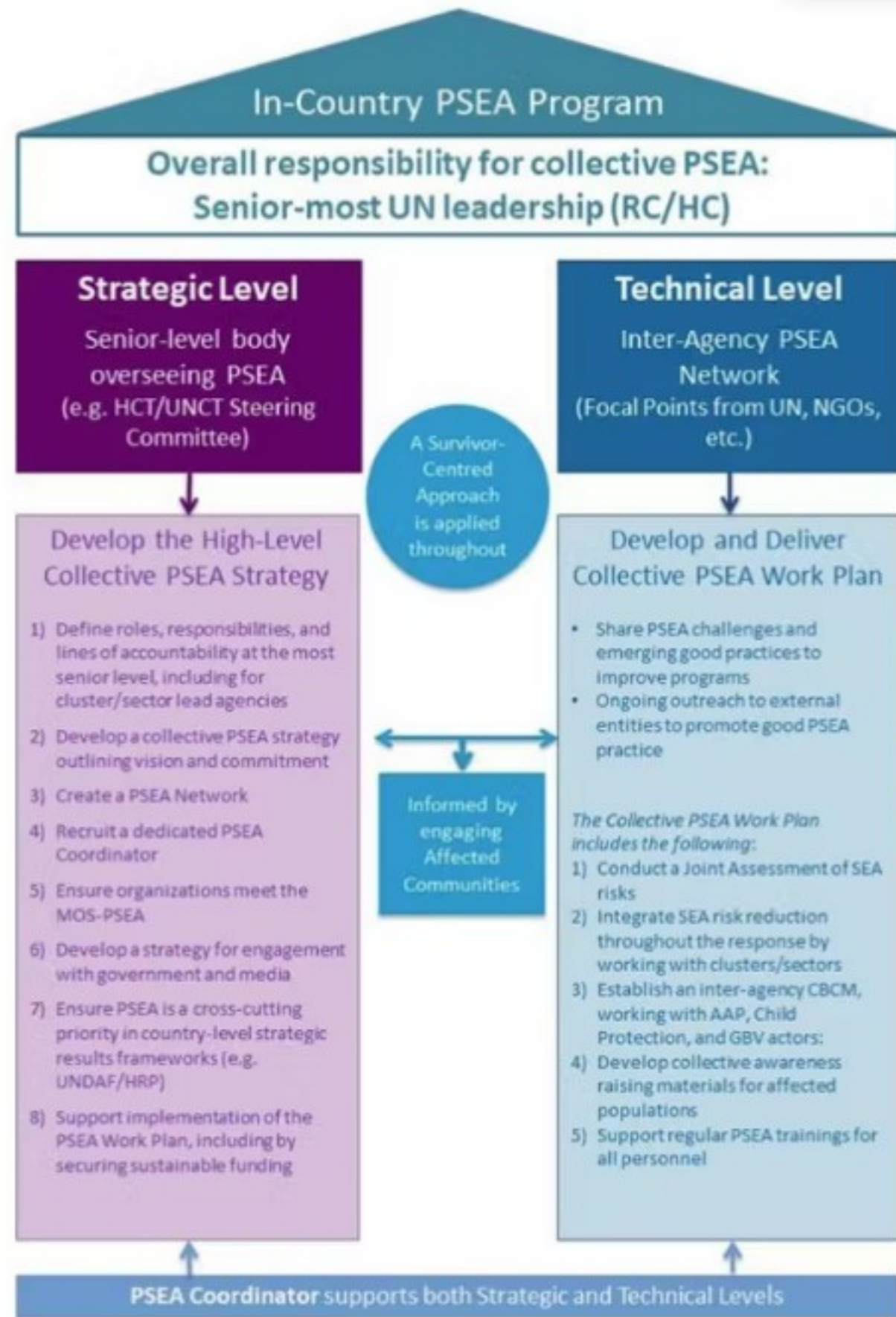


Mandatory reporting specific to SEA

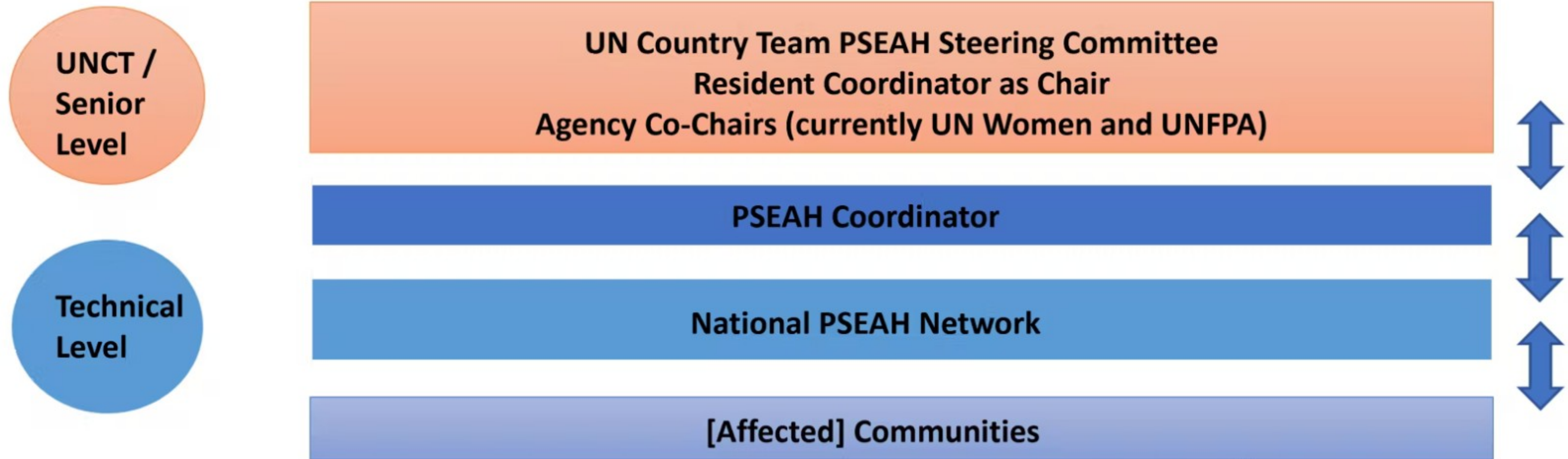
"Where a United Nations staff member develops concerns or suspicions regarding sexual exploitation or sexual abuse by a fellow worker, whether in the same agency or not and whether or not within the United Nations system, he or she must report such concerns via established reporting mechanisms."

(ST/SGB/2003/13 Section 3.2)





PSEAH Coordination Structure



The Inter-Agency PSEAH Program

- Is the collective in-country prevention and response approach to SEAH at both the technical and strategic level
- Encompasses the work of the PSEAH Network and the senior-level body overseeing the Network (currently the UNCT)
- Strengthens collaboration between organizations to build capacity on PSEAH within organizations
- In-country PSEAH Strategy + Work Plan



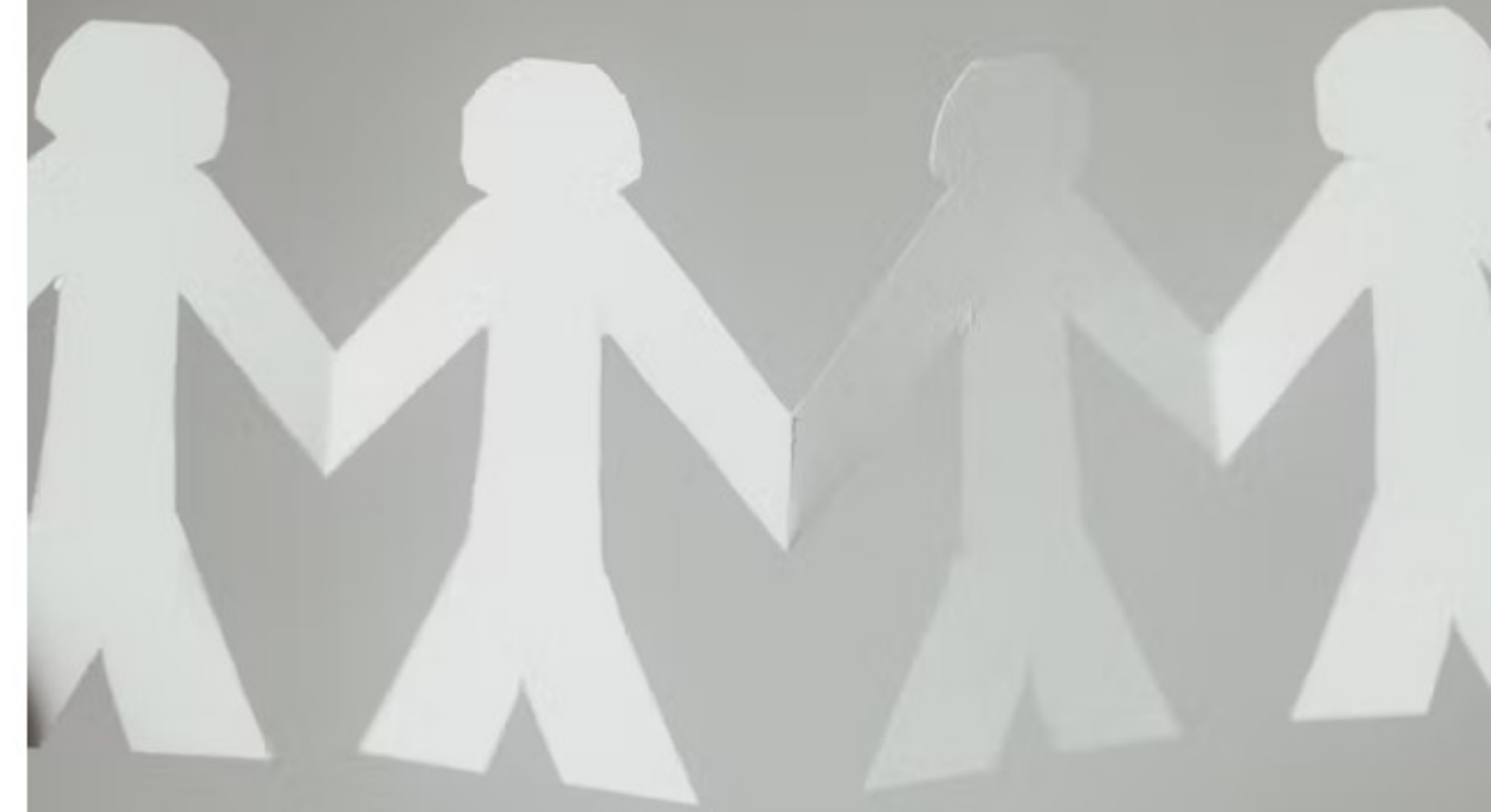
The PSEAH Coordinator

- Recruited in 2022
- Establish the PSEAH in-country Program (strategy and annual work plan implementation)
- Establish and oversee the PSEAH Network
- Strengthen PSEAH capacity within organizations
- Engage Stakeholders
- Establish and monitor an Inter-agency Community-based Complaints Mechanism (CBCM)



PSEAH Network Co-Chair Agencies 2022: UNFPA and UN Women

- Long-term functions held by organizations in-country intended to provide sustainable leadership to the PSEAH program
- Champion PSEAH at the strategic and operational level
- Oversee PSEAH Network meetings
- Most active members of the PSEAH Network in producing PSEAH Network Work Plan deliverables



The Indonesia PSEAH Network

- Current membership is comprised of 38+ members from UN agencies, Red Cross/Red Crescent Society, INGOs, and CSOs/NGOs
- Clear terms of reference (TORs) define structure, membership, oversight, and meeting logistics
- A measurable annual PSEAH Work Plan, which sets out goals and indicators based on identified risks and the community's needs
- Internal working groups and 'pools' of specialists
- Strong focus on support, capacity building, and sharing best practice



PSEAH Network Meetings

- Held every two months (or more frequently if needed)
- Meeting duration of 1.5-2 hours
- Discussions on PSEAH Network Work Plan priorities
- 1-2 PSEAH topics decided by PSEAH Network feedback - presented by PSEAH Network members and/or special guests
- Individual PSEAH Network member updates and request for support
- Notes and resources distributed among all members and filed in the records of the PSEAH Network in the online PSEAH Network resource folder.



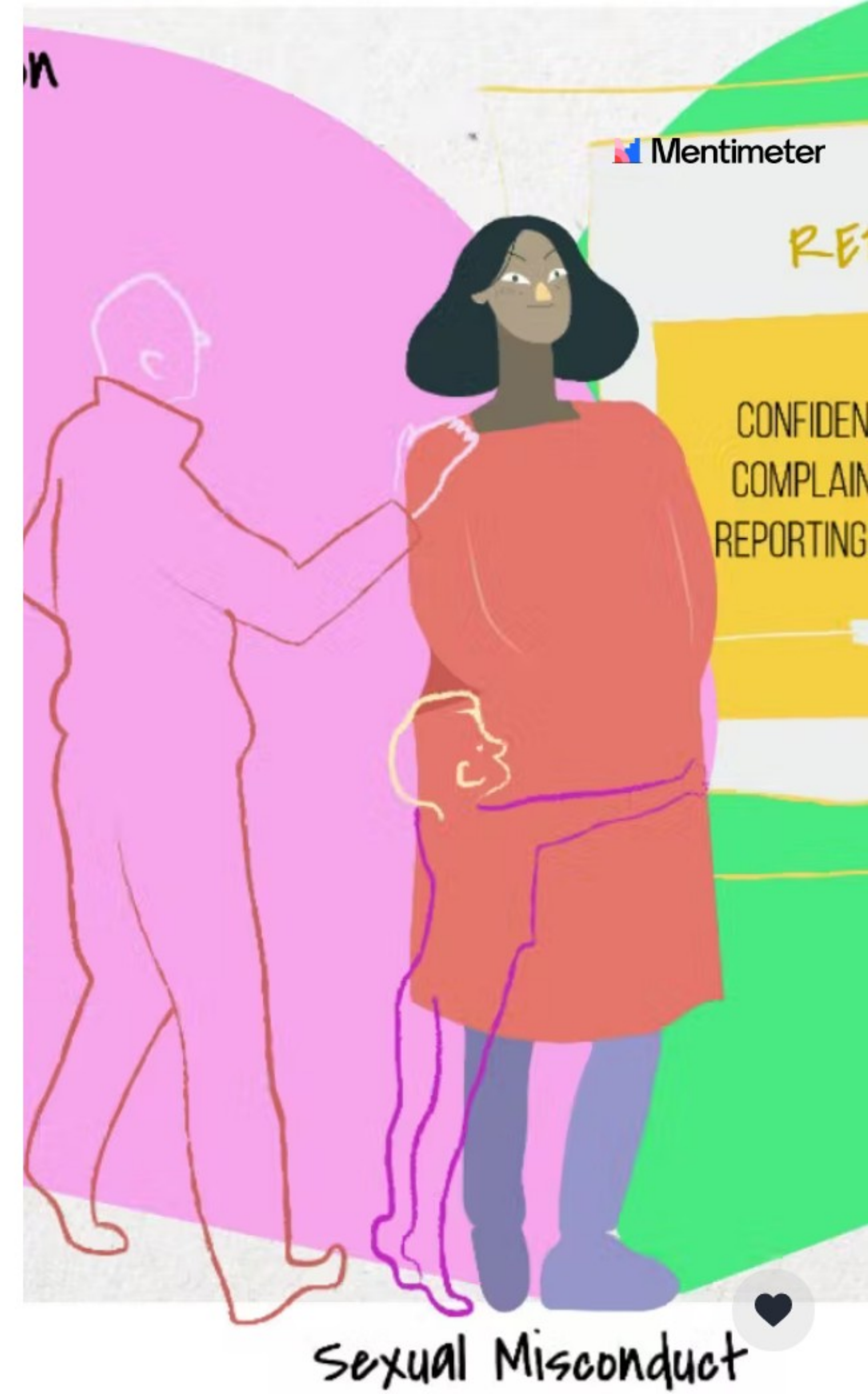
PSEAH Network Support System

- Active Indonesia PSEAH Network WAG
- Active PSEAH Network mailing list
- PSEAH resources and information management folder (regularly updated)
- Regular capacity building events based on member feedback
- One on one mentoring or group peer support available



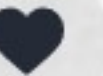
PSEAH Work Plan Priorities 2022-23

- Build coordination mechanism for in-country PSEAH program
- Conduct joint PSEAH risk assessment across the PSEAH Network
- Develop and implement an inter-agency community-based complaints mechanism (CBCM)
- Ensure every child and adult victim are referred appropriately and offered immediate, quality assistance



Find out more about the PSEAH Network

- Email the PSEAH Coordinator: maria.jones@un.org
- WA the PSEAH Coordinator: +6282110027195



Thank you!

