



# **LOCAL ADAPTATION PLAN OF ACTION (LAPA)**

**Habib ur Rehman  
International Rescue Committee (IRC)**

**“NEVER DOUBT THAT A SMALL  
GROUP OF THOUGHTFUL,  
COMMITTED CITIZENS CAN  
CHANGE THE WORLD. INDEED,  
IT IS THE ONLY THING THAT  
EVER HAS.”**

**MARGARET MEAD**



# LAPA?

## COMMUNITY-BASED APPROACH:

Community-Based Approach: LAPA is a community-based approach that takes a "vulnerability first" approach to climate change adaptation

## LAPA VS NAP:

LAPA vs NAP: LAPA contrasts with the National Adaptation Programme of Action (NAPA/ NAP) in their bottom-up, local approach.

## LAPA IS A PARTICIPATORY,

LAPA is a participatory, contextual, and inclusive bottom-up planning process, which is developed to operationalize the policy objectives outlined in the National Adaptation Plan (NAP).



## OVERARCHING OBJECTIVE OF LAPA

To integrate climate change resilience through identifying climatic risk at the local level and incorporating adaptation into the local-to-national development planning process, for creating a situation paving the way towards climate-resilient development.

# OBJECTIVES

1

To analyze the impacts of **climate change** on the socioeconomic condition of the local population

2

To explore existing **Indigenous adaptations** of the local communities

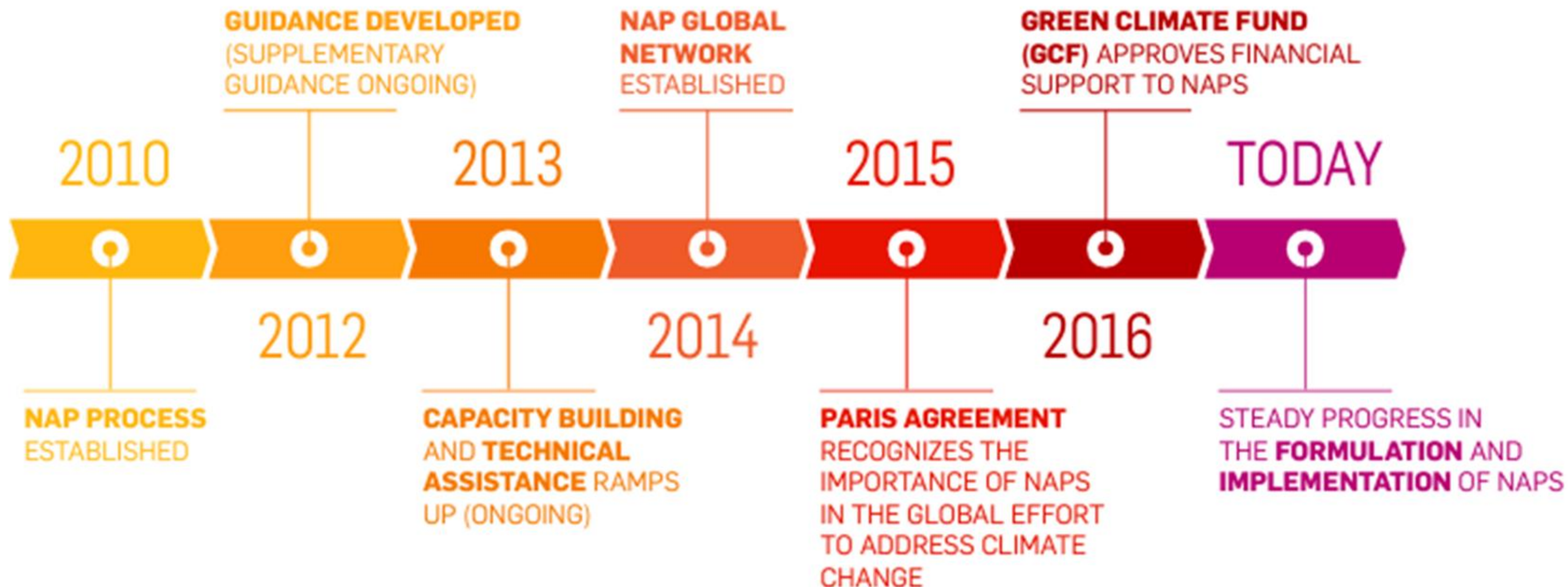
3

To identify **structural / governance issues**

4

To design long, **medium, and short-term interventions** based on the policy recommendations.

## How has the NAP process evolved since it was established?



# KEY STEPS FOLLOWED



# LAPA Development process

| LAPA Steps   | Description  | Methodology  |
|--|--|--|
| <b>Identification of Challenges</b>                      | <ul style="list-style-type: none"> <li>To identify challenges with a focus on climate change and its linkages/impacts on different sectors.</li> </ul>   | <ul style="list-style-type: none"> <li>Secondary data</li> <li>District profile</li> <li>Interviews with government departments</li> </ul>   |
| <b>Stakeholders Identification &amp; Analysis</b>        | <ul style="list-style-type: none"> <li>Who are primary and secondary stakeholders? Both in terms of responsibilities and roles and impacts of climate change on people and sectors.</li> </ul>                               | <ul style="list-style-type: none"> <li>Relevant govt. departments</li> <li>NGOs/ CSOs</li> <li>Vulnerable communities and sectors</li> </ul>   |
| <b>Prioritization of Solutions &amp; Action Planning</b> | <ul style="list-style-type: none"> <li>What are the available solutions? Prioritization of solutions in short, medium, and long terms.</li> <li>Identification of roles and responsibilities of different actors.</li> </ul> | <ul style="list-style-type: none"> <li>Key informant interviews</li> <li>Focus groups</li> </ul>   |
| <b>Integration into Planning Process</b>                 | <ul style="list-style-type: none"> <li>What steps are needed to integrate suggested solutions into district level planning process?</li> </ul>   | <ul style="list-style-type: none"> <li>Interviews with Deputy Commissioner Qambar Shahdadkot</li> <li>Data collection and interviews with relevant departments of government of Sindh</li> </ul> |
| <b>Review &amp; Progress Assessment</b>                  | <ul style="list-style-type: none"> <li>Need for periodic review of LAPA solutions.</li> </ul>  | <ul style="list-style-type: none"> <li>Monitoring frameworks</li> <li>Study of government planning and development processes</li> </ul>  |





# INTEGRATION OF LAPA IN THE PLANNING PROCESS



Identification of Vulnerable Areas

Identification & Prioritization of Adaptation Actions

Mobilization of Relevant Departments/Actors

Sequential Implementation of Interventions

Coordination Mechanism for Implementation

Scaling Up of Successful Interventions into National Planning

# EXAMPLE ( LAPA INTERVENTIONS FOR AGRICULTURE)

| Challenge   | Sector      | Stakeholders           | Solutions  | Prioritization of solutions and action planning (when to implement?) |             |           |
|---|-------------|------------------------|--|--|-------------|-----------|
|   |             |                        |  | Immediate  | Medium Term | Long Term |
| Dwindling livelihoods resources owing to lack of water, and longer droughts resulting in contracted agricultural activities | Agriculture | Agriculture Department | <ul style="list-style-type: none"> <li>Introduction of drought resistant crop varieties to farmers living in drought-affected areas</li> </ul>   |  | X           | X         |
|   |             | Academia               | <ul style="list-style-type: none"> <li>Government should also consider public-private partnerships and involving agriculture research institutes to find effective and efficient ways to fight climate change's impact on agriculture and agriculture communities</li> </ul> | X  | X           | X         |
|   |             | CSO/NGOs               | <ul style="list-style-type: none"> <li>Farmers need to be educated on climate resilient farming/ Climate Smart Agriculture</li> </ul>  |  | X           | X         |
|   |             |                        | <ul style="list-style-type: none"> <li>Cooperation mechanism to be developed with other forums working on Climate Adaptation and Mitigation in the regions</li> </ul>  |  | X           | X         |



**THANK YOU**